

NEW *Tetranychidae* (Acarina) FROM BRASIL <sup>1</sup>Carlos H.W.Flechtman <sup>2</sup>

In the dissertation "Contribution to the knowledge of some plant mites of the State of São Paulo", submitted to the Escola Superior de Agricultura "Luiz de Queiroz", University of São Paulo, three new species of spider mites are described. For one of these was proposed a new genus and a new subfamily created.

*Atrichoproctinae* n.subfam.

This subfamily is established based upon the presence, in the female, of only one pair of anal setae and one pair of para-anal setae. The empodium is clawlike. Male unknown.

*Atrichoproctinae* fits into the *Tetranychidae* as shown in the following key:

Key to the sub-families of *Tetranychidae*.

1. Empodium with tenent hairs; anal plate of female with three pairs of anal setae ..... *Bryobiinae* Berlese  
Empodium without tenent hairs; female with less than three pairs of anal setae ..... 2
2. Female with two pairs of anal setae... *Tetranychinae* Berlese  
Female with one pair of anal setae ..... 3
3. Empodium reduced to a knoblike protuberance; female with two pairs of para-anal setae ..... *Aponychinae* Rimando  
Empodium clawlike; female with one pair of para-anal setae..  
..... *Atrichoproctinae* n.subfam.

*Atrichoproctus* n.g.

---

Body ovate; dorsal integument striate, showing large

<sup>1</sup> Recebido para publicação em 21/12/1967.

<sup>2</sup> Cadeira de Zoologia - ESALQ/USP.

lobes except in the area between the first and second pairs of dorso-central and dorso-lateral histerosomal setae, where the striae are finely lobate. Dorsum of tarsus I bearing two pairs of adjacent duplex setae. Tarsus II with one pair of duplex setae. Empodium a well developed claw, with reduced proximo-ventral hairs. Dorsal setae on strong tubercles.

*Atrichoproctus uncinatus* n.sp.

Plates I and II

Female: Rostrum reaching the base of femur I. Tarsus I with two pairs of duplex setae, near the distal end of the segment; four tactile setae proximal do duplexes. Propodosoma with three pairs of setae; histerosoma with ten pairs of setae. Humeral, external sacral and clunal setae shorter than dorsocentrals and dorsolaterals, and not set on tubercles. Area immediately anterior to genital flap with longitudinal striae. Peritreme straight distally, with a light distal enlargement. Length of body, 376 u; width, 231 u.

Male: unknown.

Types: 2 females, Matão, São Paulo, on *Desmodium* sp., May 19, 1967; and 9 females, Piracicaba, São Paulo, on *Rhododendron* sp., September 11, 1967. In the authors collection.

The other two species, belonging to the sub-family *Tetranychinae*, are:

*Eotetranychus viridis* n.sp.

Plates III and IV.

Female: Rostrum extending to femur I. Papal sensillum strong, about two and half times as long as broad. Tibia I with eight tactile and one sensory setae; Tarsus I with five setae proximal to duplexes, and two tactile setae on the venter of the segment beyond the duplexes. Integumental striae transversely parallel and finely granulate. Dorsal setae longer than intervals between their bases. Striae of the integument immediately anterior to genital flap longitudinal. Length of body, 390 u; width, 221 u.

Male: Tibia I with ten tactile and two sensory setae; tarsus I with three tactile setae proximal do duplexes. Tibia II with seven tactile setae. Aedaeagus bent dorsad. Length of body, 285 u.

Types: 5 males, 5 females, Piracicaba, São Paulo, on *Meibomia* sp., September 21, 1967. In the authors collection.

*Oligonychus psidii* n.sp.

Plates V and VI

Female: Palpal sensillum twice as long as broad. Tibia I with nine tactile setae. Tarsus I with four tactile and one sensory setae proximal to duplexes. Tibia II with six tactile setae. Dorsal striae of integument finely granulate. Length of body, 381 u; width, 198 u.

Male: Palpal sensillum reduced. Peritreme straight, distally ending in a single bulb. Tibia I with ten tactile and two sensory setae proximal to duplexes. Dorsal setae long and tapering. Aedaeagus bent ventrad. Length of body, 285 u.

Types: 5 males, 5 females, Piracicaba, São Paulo, on *Psidium guajava*, July 28, 1967. In the authors collection.

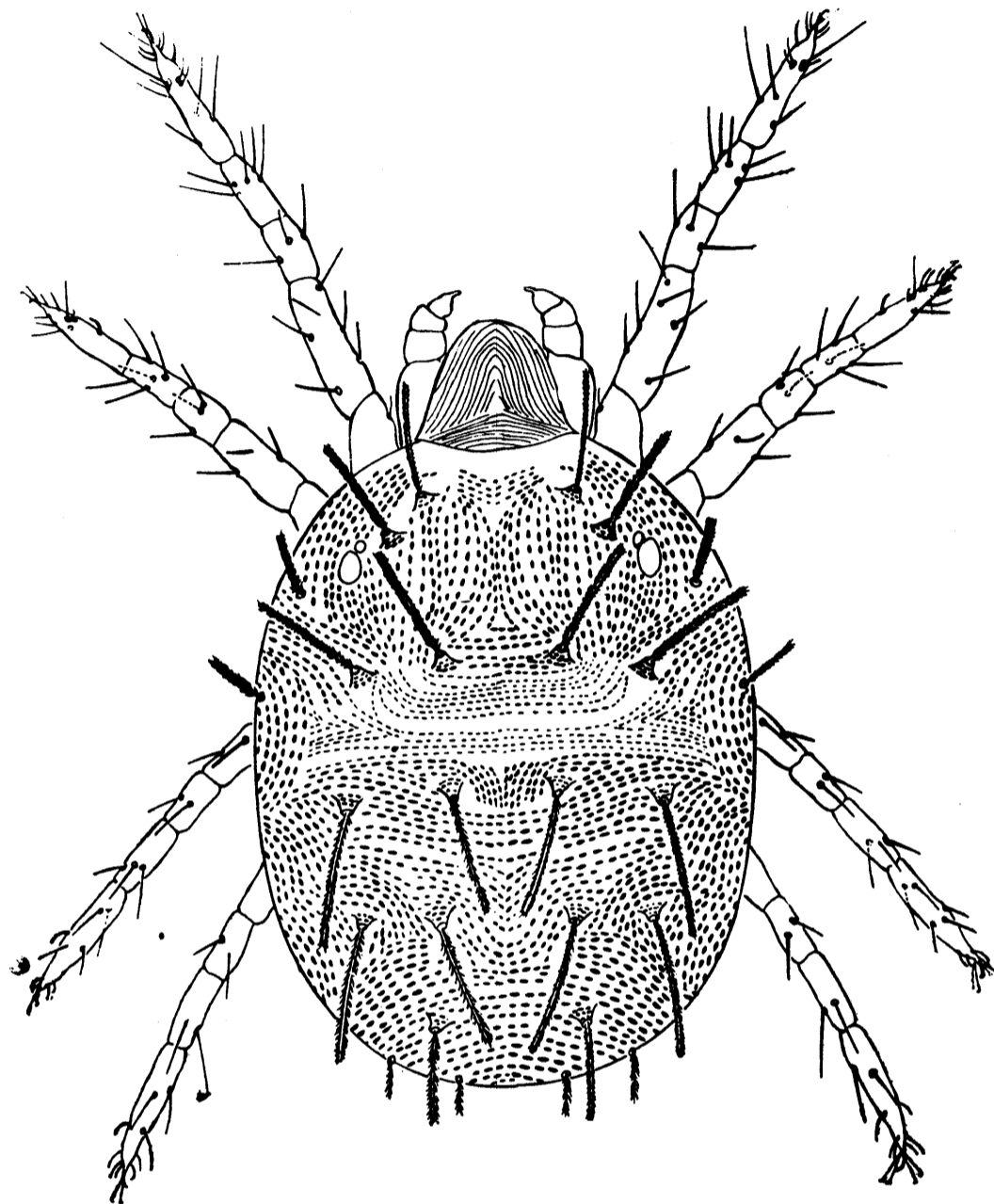
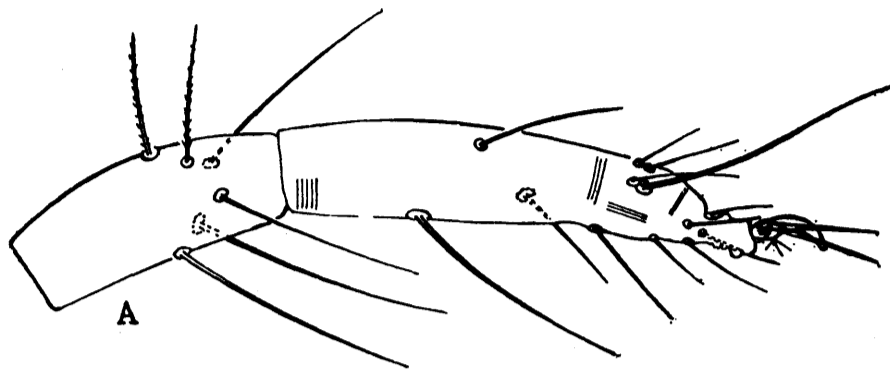


Fig. 1

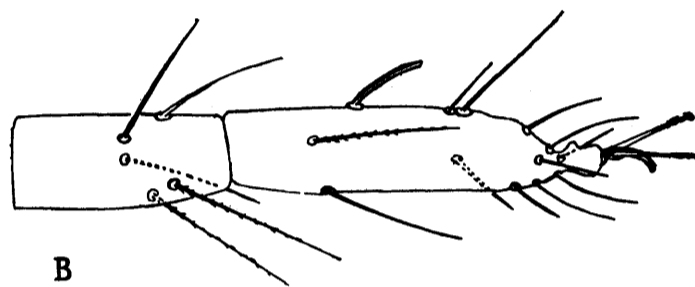
*Atrichoproctus uncinatus* n.g., n.sp.

Dorsal aspect of female

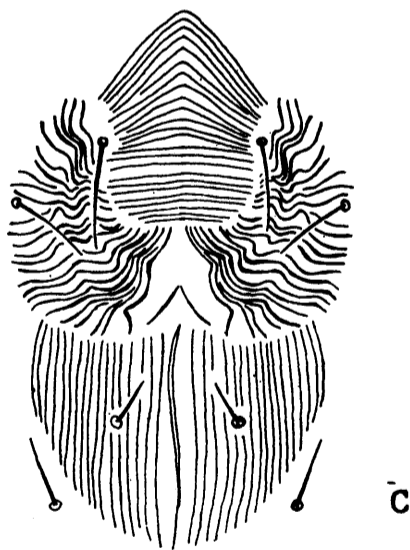
Fig. 2 - *Atrichoproctus uncinatus* n.g., n.sp.



A - Tarsus and tibia I of female.



B - Tarsus and tibia II of female.



C - Genito-anal region of female.

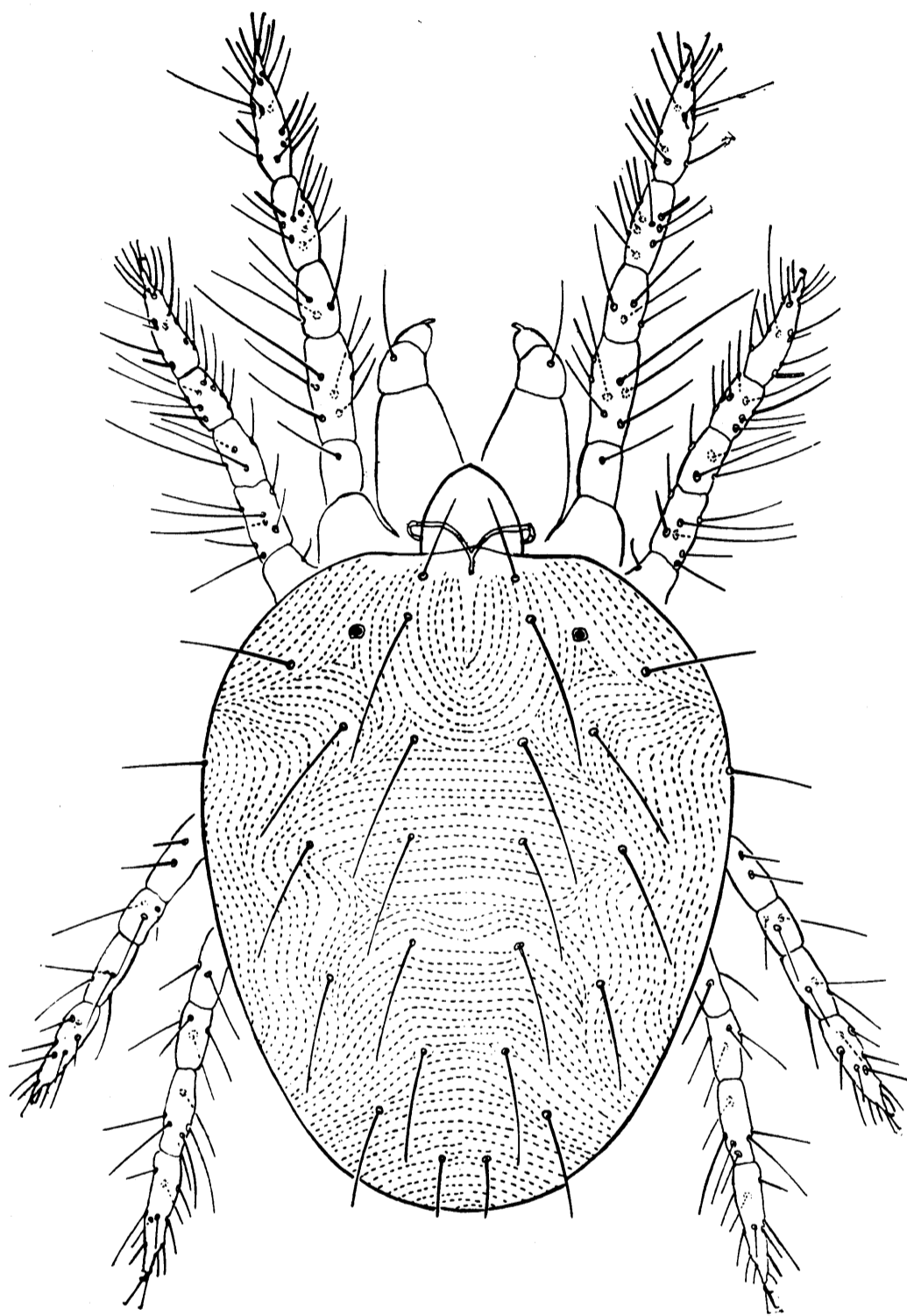


Fig. 3

*Eotetranychus viridis* n.sp.

Dorsal aspect of female

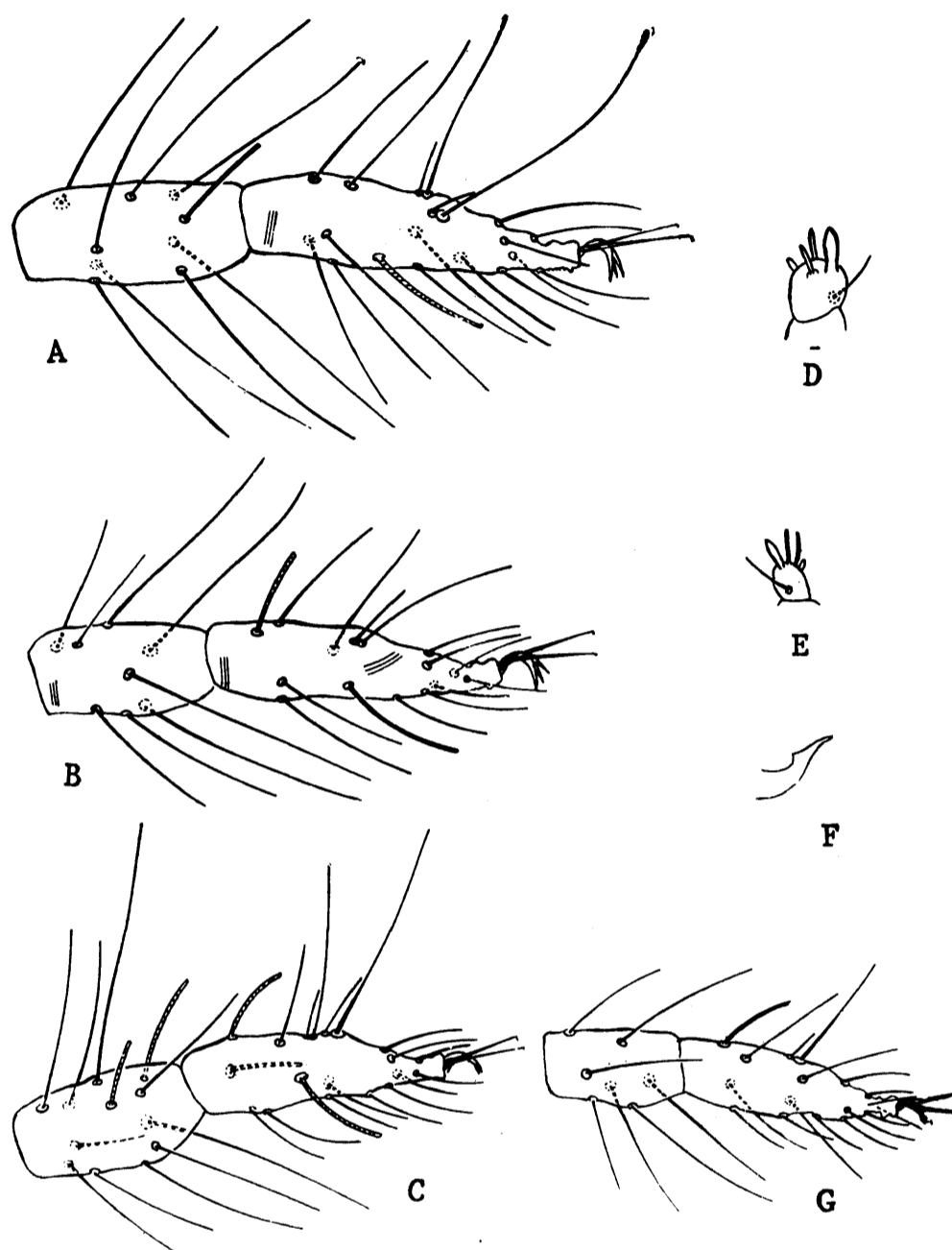


Fig. 4

A - Tarsus and tibia I of female; B - tarsus and tibia II of female; C - tarsus and tibia I of male; D - tarsus and tibia II of male; E - terminal segment of female palpus; F - terminal segment of male palpus; G - Aedaeagus.

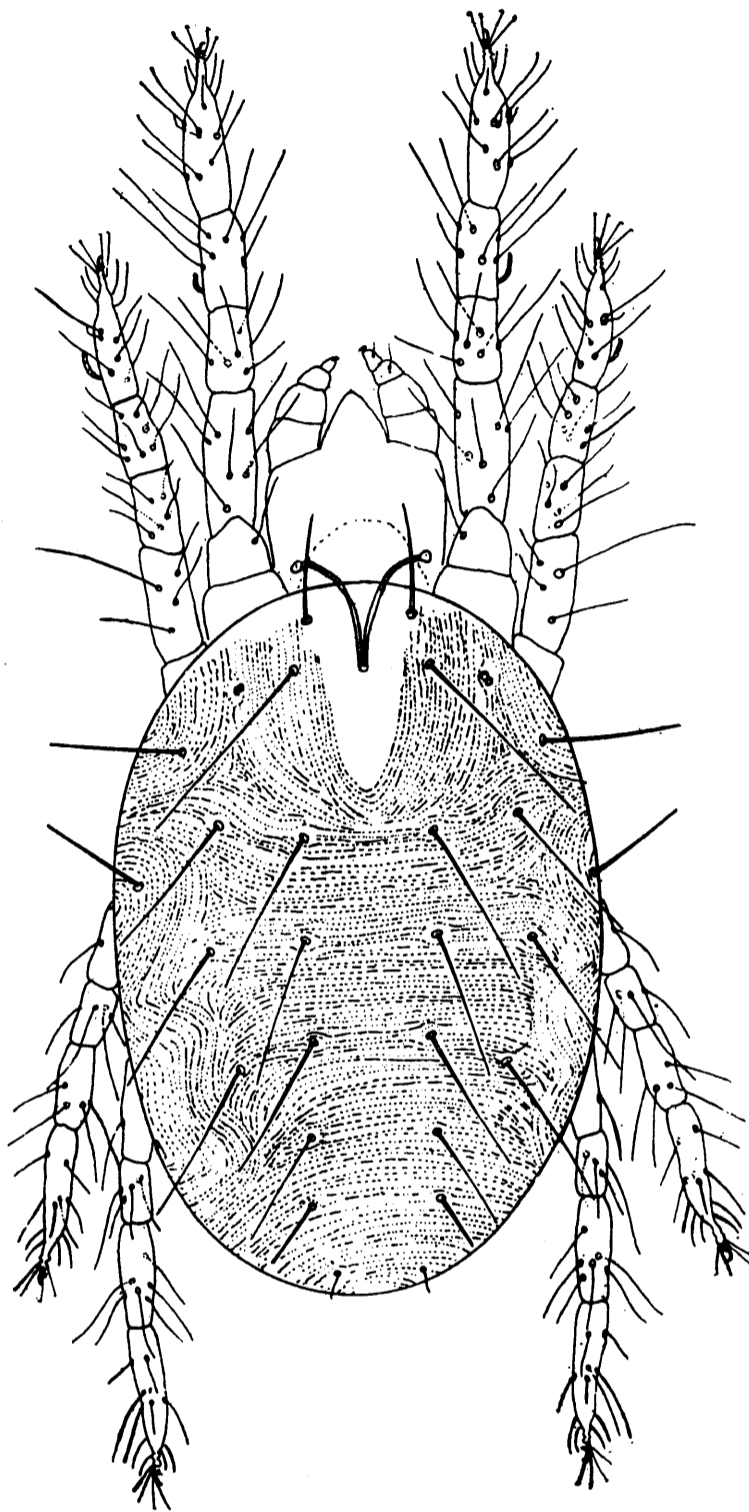


Fig. 5

*Oligonychus psidii* n.sp.

Dorsal aspect of female

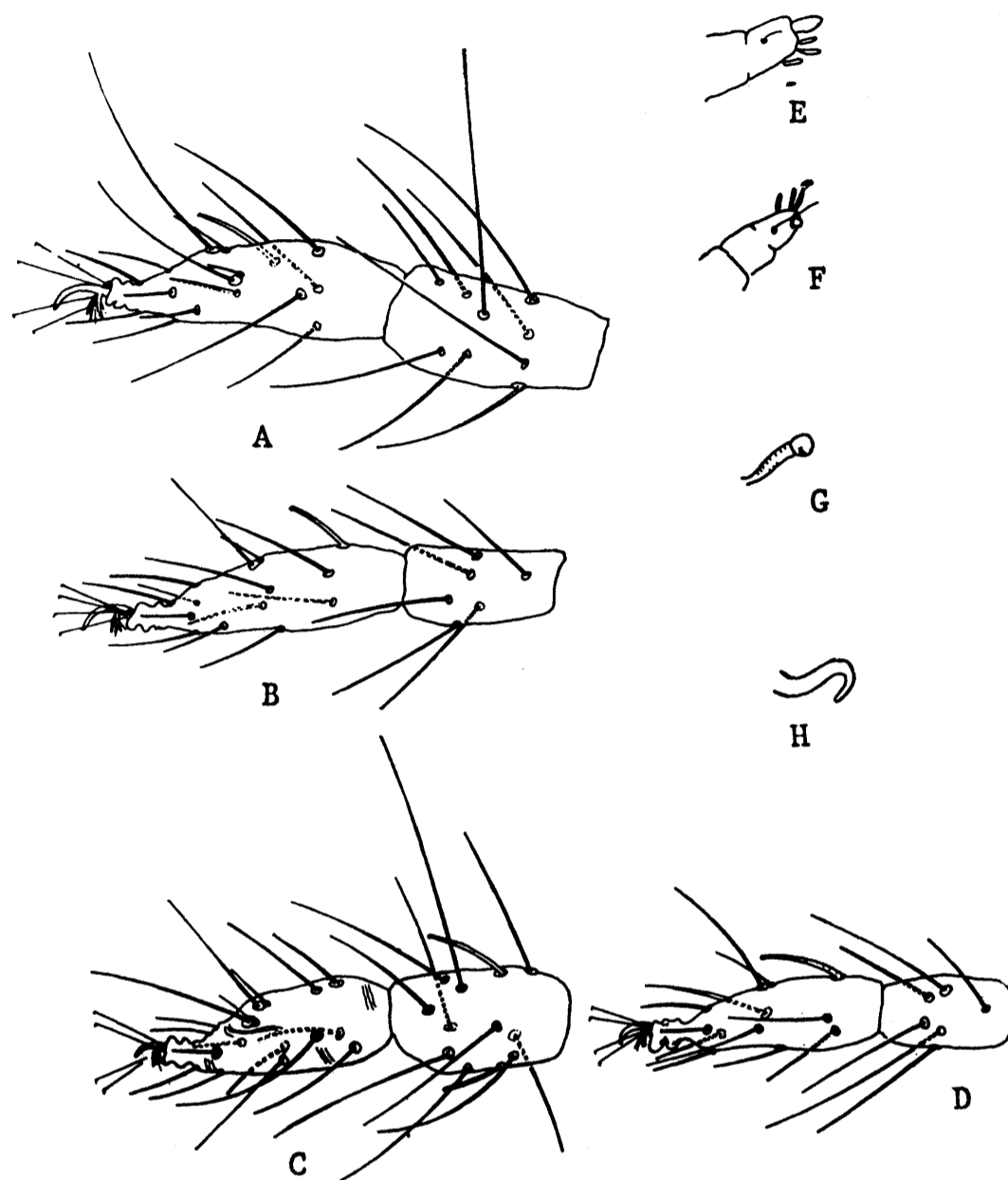


Fig. 6

*Oligonychus psidii* n.sp.

A - tarsus and tibia I of female; B - tarsus and tibia II of female; C - tarsus and tibia I of male; D - tarsus and tibia II of male; E - terminal segment of female palpus; F - terminal segment of male palpus; G - distal end of peritreme; H - Aedaeagus.

